

ITZAMNA'S EYE



WALKTHROUGH

Adventurers!

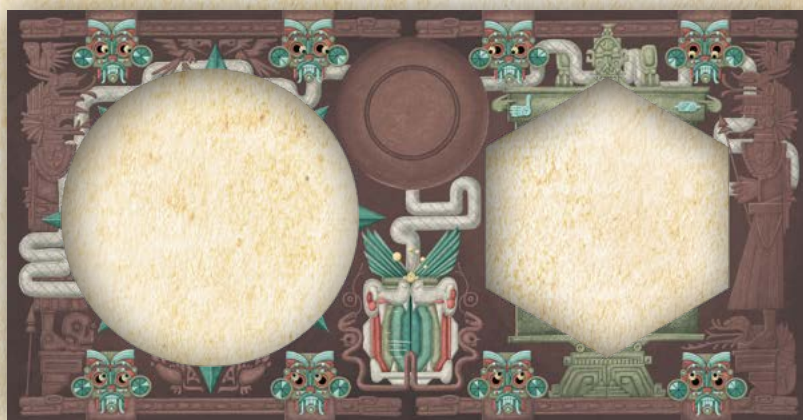
You have accepted the challenge of Itzamna's Eye. It seems that you need some help to enter the temple. This walkthrough will serve your needs, but be aware for spoilers! Once you've assembled the first big puzzle, you'll see the front of the lock to the Temple of Itzamna, which houses Itzamna's Eye – a legendary gemstone with magical powers. Two parts are missing: a circle and a hexagon.

The challenge you face is to open the temple door by placing the two missing parts in exactly the right position at exactly the right place. But there's more! From the instructions and my note in Mr Eaton's notebook it appears that you also have to find a gemstone of a particular shape and colour.

Envelope 1

Riddle 1

It appears you're searching for masked outsiders. But what does the text mean? On the big puzzle, you can see faces at the top and the bottom. The text says that one cannot be seen. If you examine the faces closely, you can see that the eyes are all looking at something else. If you follow the lines, you'll see they are looking at each other. Could one of the faces not be seen by a single face? After all, one of the masks is concealed from everyone's eyes. But what then?



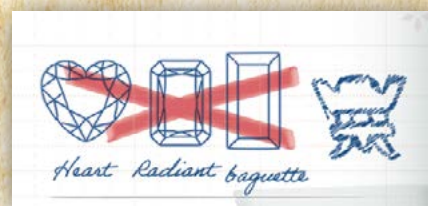
the other. The Bearer of Time is therefore the figure that can be rotated. According to the riddle, he points towards which God to honour, but not with his spear. Neither should we be distracted by his big feet, but follow his trail. If you examine the amulet closely, you'll see that the Bearer's eyes are looking at one of the symbols. But which symbol is the right one? How do we follow the Bearer's trail?



On pages 12 to 16 inclusive of Mr Eaton's notebook, we can see the symbols shown on the edge of the amulet, with gemstone shapes behind them. But how do we choose the right one?

"Follow the trail" is the key. As we can read on the poster, Mr Eaton has the curious habit of drawing the Vestigium logo everywhere.

As you can see from Mr Eaton's letter, the logo is a footprint. If you examine the amulet carefully, you'll see two smudges that together make up a footprint. The Bearer of Time is looking at a particular symbol on the edge. On page 15 of Mr Eaton's notebook, you'll see behind the symbol that you can cross out "heart", "radiant" and "baguette" from the table.

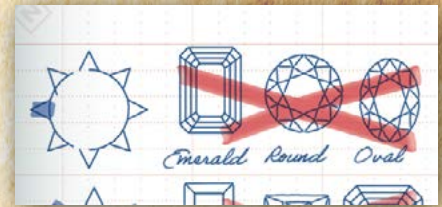


Riddle 3

You can now place and rotate the round puzzle within the big puzzle. Apparently, you can rule out another gemstone like this. But how? On page 18 of Mr Eaton's notebook, you'll see the eye that also features in the centre of the small round puzzle. You'll also see the following: "Turned to east, where does the ray of sunlight end?" There's also a compass rose. It now seems clear. The eye must point east. The masks show what is above and below, so we can also determine the direction of the wind. The eye in the centre of the maze contains arrows, one of which shows a path through the maze. Point this arrow to the east and follow the path from the centre to the edge. If you follow the path carefully, you'll arrive at an exit facing west.



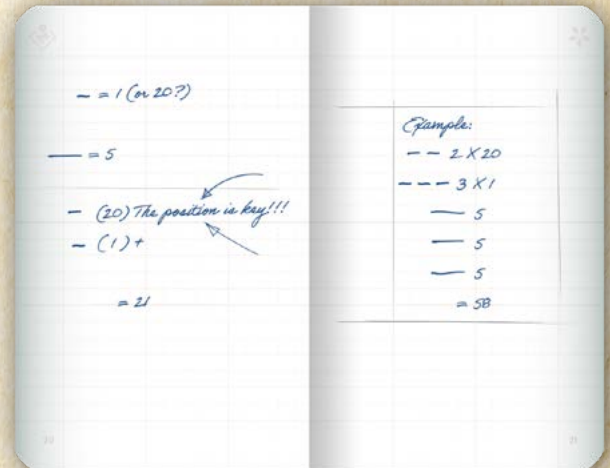
Where do we go from here? On pages 24 and 25 of Mr Eaton's notebook, you'll see a number of compass roses with crossed out gemstone shapes behind them. Directions have been coloured in on the compass roses. We can now assume that if we face west we can cross out the "emerald", "round" and "oval" in the table.



Envelope 3

Riddle 4

The door has scars. If you're good at sums you can get through. Which door is the right one? There isn't a door on the hexagon you've managed to put together. You could think that there's a kind of door around the hexagon, but there aren't any scars to be found. On pages 20 and 21 of Mr Eaton's notebook, you'll see a sum with lines that could easily be scars. So it must be related to the riddle. But where are the lines of the scars?



If you examine the large puzzle closely, you'll see a snake's head in the centre. There seem to be scratches on it: scars. There are two short scratches at the top, then a short scratch and four long scratches below. Although slightly different, this does look similar to the example on page 21 of Mr Eaton's notebook. We're going to compare the example with the scars on the door to calculate the sum.

Example: 2 lines is $2 \times 20 = 40$

Door shows 2 lines, meaning $2 \times 20 = 40$

Example: 3 short lines is $3 \times 1 = 3$

Door shows 2 short lines, meaning $2 \times 1 = 2$

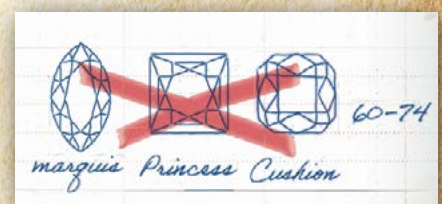
Example: a long lines is 5

Door shows 4 long lines, meaning $4 \times 5 = 20$

Now we have a number for each scar and we can finish the sum: $40 + 2 + 20 = 62$.

On pages 22 and 23 of Mr Eaton's notebook, you'll see numbers, again with crossed out gemstone shapes behind them. With our score of 62, we can now cross out the "marquis", "princess" and "cushion" shapes in the table.

Only the "trillion" shape is left.

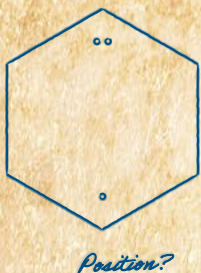


Riddle 5



This is clearly about the new hexagonal puzzle: "Each of the six sides is marked with a colour" and "turn the keystone until it reaches its proper position". "You'll

finally learn what colour gemstone to take". But how do we find out? Mr Eaton's notebook shows us the way again. On pages 26 and 27, you'll see a number of symbols that also appear on the hexagonal puzzle. They are even on every corner. In the notebook, there are also colours **along with** them. But which colour is the right one? Again, Mr Eaton's notebook leads us to the outcome. On page 33,

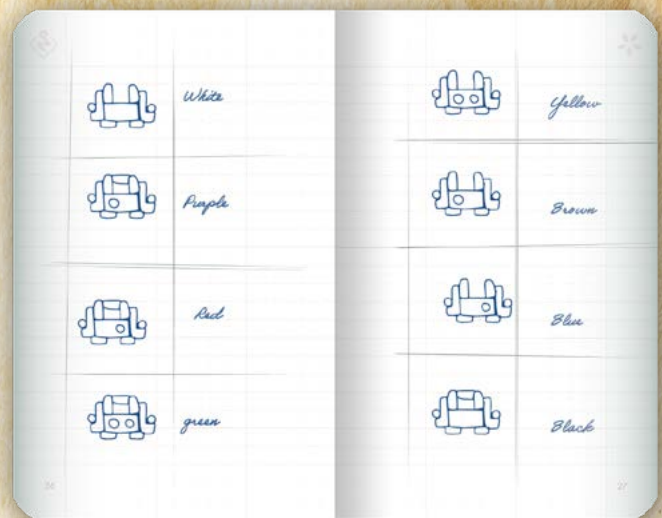


there's a strange drawing of a hexagon! We see two dots above and one dot below. If you examine the hexagonal puzzle carefully, you'll see that the colour symbols also contain dots. The hexagon puzzle can be placed in the big puzzle as shown in the example.



But you still don't know the right colour. With help from pages 26 and 27 of Mr Eaton's notebook, you could certainly say that "green" is above and "brown" below. Careful

examination will reveal that to the left and right of "green" there are two symbols of the same light-blue colour as the colour icon. On pages 26 to 31 inclusive of Mr Eaton's notebook, you'll find an explanation related to each of the symbols. On the left, it says "grab" and on the right "stone". You read "grab – green – stone". You've found the right colour. In the gemstone table, you can now see that you're looking for a **green gemstone**.



Riddle 6

Itzamna's Eye is therefore a **green trillion shaped gem**. You must "follow the white snakes towards the sky" and "let the Disc of Gems determine the setting" (the back of the amulet of the Bearer of Time) "to match the snakes' endpoint". Both keystones – the circle and the hexagon – must be turned for the last time. If you examine the Disc of Gems closely, you'll see that the **green trillion shaped gem** appears three times. You can only see the **green trillion shaped gem** once on the round keystone and the hexagonal keystone. The **Disc of Gems** also seems to fit on the big puzzle in an empty circle above the centre, from which three white snakes emerge. The Disc of Gems can be placed in such a way that the three **green trillion shaped gems** are at the three ends of the white snakes. If you follow the white snake to the circle, you will see that it ends somewhere on the round puzzle.



The **round puzzle** can be rotated in such a way that the snake ends up at the **green trillion shaped gem**.

Albeit more slowly, the same action can be performed on the hexagonal keystone. This can also be placed in such a way that the **green trillion shaped gem** ends up at the snake. We have now turned the two keystones one last time based on Itzamna's Eye, the green **gem** and the white snake.



Fold the poster over the jigsaw puzzle and now carefully turn over the completed jigsaw puzzle so that you can see the bottom of the jigsaw with the red filter.

Well done!

W.S.

